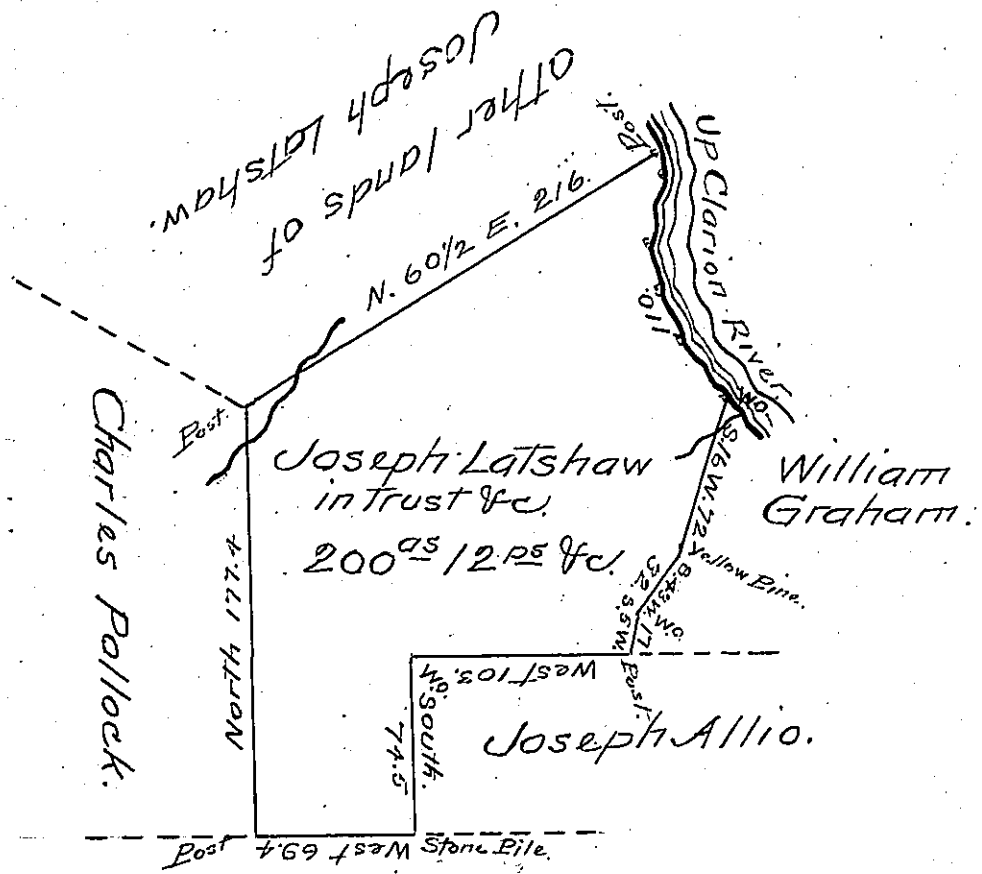


Courses and distances
Up Clarion River.

S. 3° W.	10.
S. 10° W.	27.
S. 9° E.	19.
S. 27° E.	22.
S. 37° E.	32.
<u>Total</u>	<u>110.</u>



Simmeon How.

IN PURSUANCE of a Warrant Dated August 31st 1840. Granted to Joseph Latshaw in Trust for himself and the legal representatives of Peter Latshaw deceased and Charles Pollock.

Surveyed to the same on the 18th of September 1840 The above described Tract of land containing two hundred acres twelve perches and allowance of six percent $\frac{1}{2}$ Situate in Perry Township Armstrong (now Clarion) County $\frac{1}{2}$

To Jacob Sallade Esq^r } For Isaiah Guthrie D.S.
Surveyor General } T. E. Meredith

I do hereby certify that I have examined the above return of Survey and find it to be correct.

Isaiah Guthrie D.S.

IN TESTIMONY that the above is a copy of the original remaining on file in the Department of Internal Affairs of Pennsylvania, made conformably to an Act of Assembly approved the 16th day of February, 1833, I have hereunto set my Hand and caused the Seal of said Department to be affixed at Harrisburg, this Twenty fourth day of October 1905.

Loose D. Brown
Secretary of Internal Affairs.